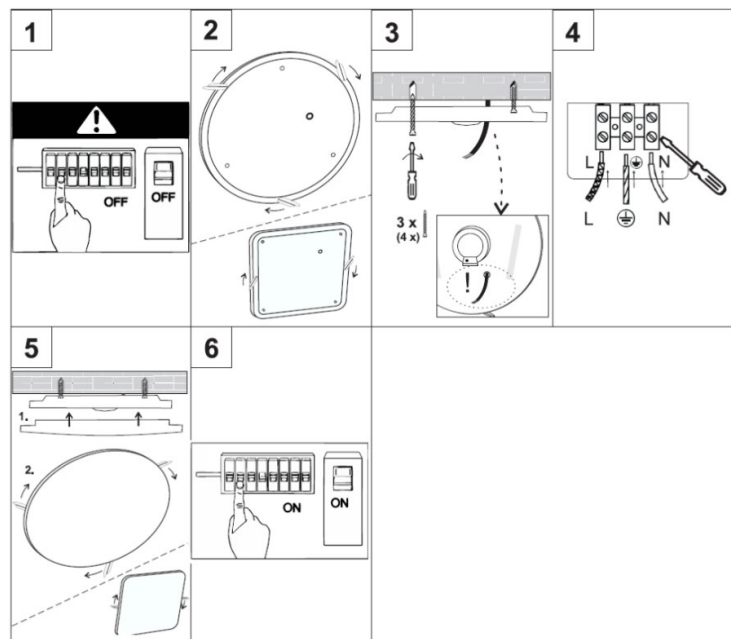


## EN Installation Instructions WO796, WO797

Thank you for purchasing our product. Please read this manual carefully and heed the safety warnings and instructions before installing, using or repairing the equipment. This will ensure not only the protection of persons, but also the long life of the equipment.

Mark	Operating voltage	Consumption	Angle of illumination	Chromaticity	Cover age
WO796	220-240V AC	18W	120°	3000K, 4000K, 6500K	IP54
WO797	220-240V AC	24W	120°	3000K, 4000K, 6500K	IP54



The light source of this luminaire is non-replaceable, at the end of its service life the entire luminaire must be replaced and disposed of in a designated place. This product contains a light source that for design reasons cannot be removed for verification and therefore the entire product is considered a light source. The power cord cannot be replaced if damaged, the unit must no longer be used.

### WARNING

1. Installation may only be carried out by a qualified worker with a qualification according to Decree No. 50/1978 Coll., as amended, at least a knowledgeable worker according to § 5 of Decree No. 50/1978 Coll., as amended.
2. Do not cover the luminaire with anything or hang anything on it
3. Do not repair or modify the equipment in any way.

### INSTALLATION

1. Switch off the power supply
2. Open the luminaire cover by turning the three levers on the back
3. Push the supply cable through the hole and screw the back cover to the wall into the pre-drilled holes with dowels
4. Plug in the power cable
5. Attach the cover and turn the levers holding the luminaire together
6. Switch on the power supply

**Chromaticity switch:** set the desired light temperature with the slider on the source inside the luminaire

