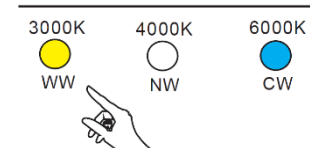


## EN Installation Instructions WO801-B, WO801-W

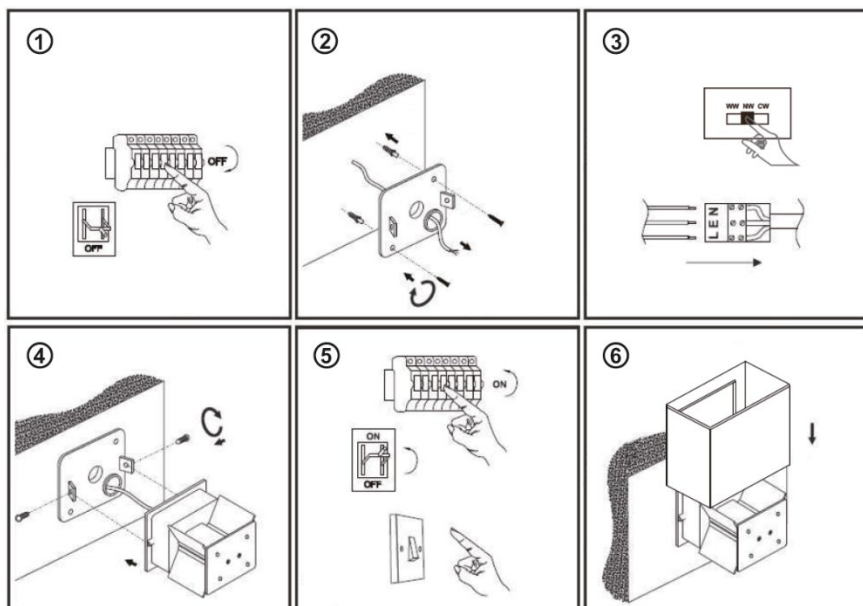
Thank you for purchasing our product. Please read this manual carefully and heed the safety warnings and instructions before installing, using or repairing the equipment. This will ensure not only the protection of persons, but also the long life of the equipment.

Mark	Operating voltage	Consumption	Angle of illumination	Chromaticity	Dimensions	Coverage
WO801-B	AC175~265V	6W	10~100°	3000K, 4000K, 6000K	100x100x100mm	IP54
WO801-W	AC175~265V	6W	10~100°	3000K, 4000K, 6000K	100x100x100mm	IP54

### 3CCT Switch



SELECT BY SLIDING THE SLIDER ON THE POWER SUPPLY



### WARNING

1. Installation may only be carried out by a qualified worker with a qualification according to Decree No. 50/1978 Coll., as amended, at least a knowledgeable worker according to § 5 of Decree No. 50/1978 Coll., as amended.
2. Do not cover the luminaire with anything or hang anything on it
3. Do not repair or modify the equipment in any way.

### INSTALLATION

1. Switch off the power supply
2. Unscrew the side screws holding the back cover, drill holes in the wall and insert dowels into them, push the power cable through the hole in the cover and then screw the cover to the wall.
3. Connect the power cord to the luminaire
4. Fit the luminaire and screw it to the back cover
5. Switch on the power supply
6. Fit the cover

**Chromaticity switch:** use the slider inside the luminaire to set the desired light temperature

The light source of this luminaire is non-replaceable, at the end of its service life the entire luminaire must be replaced and disposed of in a designated place. This product contains a light source that for design reasons cannot be removed for verification and therefore the entire product is considered a light source. The power cord cannot be replaced if damaged, the unit must no longer be used.

