



EN Instructions for use of Solight WO802 light panel

Dear customer, thank you for purchasing our product. Please read the following instructions carefully and follow them to serve you safely and to your full satisfaction. This will prevent misuse or damage. Avoid unprofessional handling of this appliance and always observe the electrical appliance usage guidelines. Keep the instruction manual carefully. Installation may only be carried out by a qualified worker qualified in accordance with Decree No. 50/1978 Coll. as amended, at least a worker who is knowledgeable in accordance with § 5 of Decree No. 50/1978 Coll. as amended.

	WO802
Power input	40W
Dimensions	450x450
IP coverage	IP20

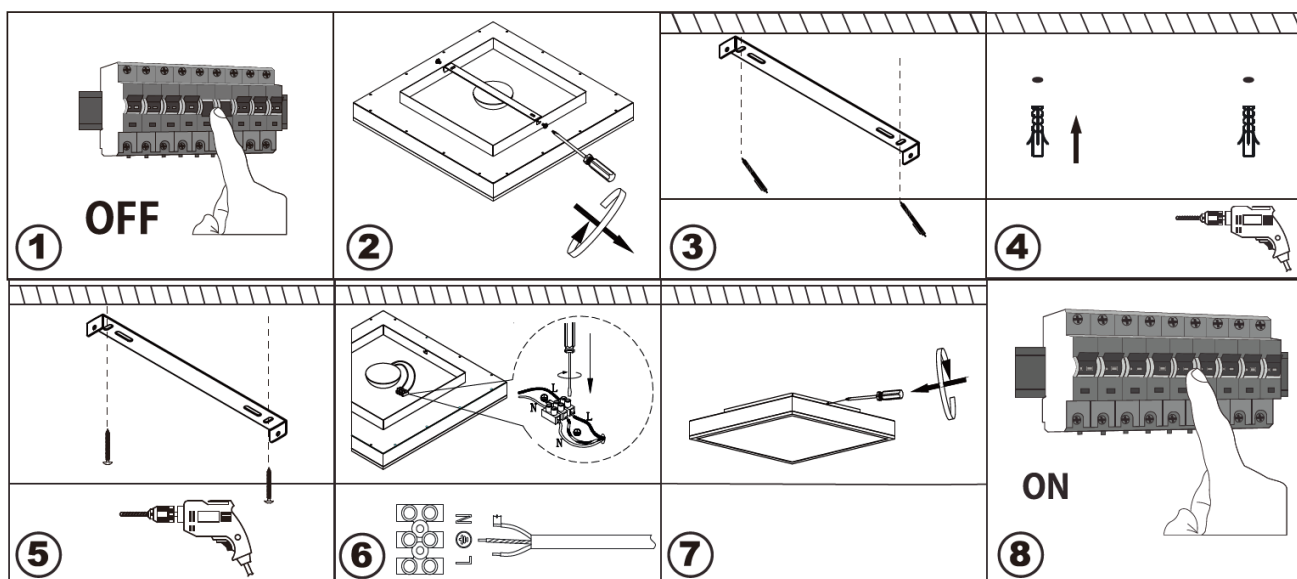
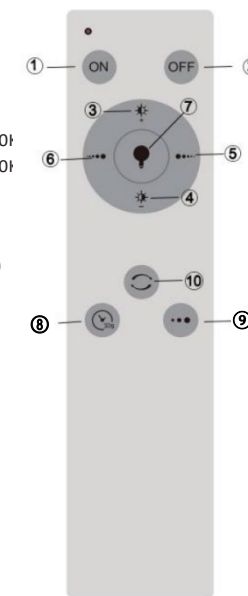
Contents of the package

	1x
	1x

Memory function for control with a simple switch: The LED lighting allows switching of preset modes with a simple switch. If you leave a delay of approx. 20 seconds after switching off the light, the light will turn on in the last used mode.

Memory function for remote control operation: The light will return to the last used mode after switching on only if the previous mode was set with buttons 3, 4 and 6.

1. Turn on
2. Shutdown
3. Smooth brightness increase (up to 100%)
4. Smooth brightness reduction (up to 30%)
5. Continuous change of light temperature from 3000K to 6500K
6. Continuous change of light temperature from 6500K to 3000K
7. Night light (approx. 12% brightness / 4200K)
8. Timer: the luminaire switches off automatically after 30 seconds
9. Gradual change of light temperature (3000K, 4200K, 6500K)
10. If there are multiple luminaires of this type within range of the remote control, it synchronizes all of them to the same lighting setting



1. Switch off the power supply
2. Open the light panel
3. Use the back plate to mark the three holes for drilling
4. Drill holes and insert dowels into them
5. Screw on the back plate
6. Connect the supply cable to the terminal block
7. Close the light panel
8. Switch on the power supply

The light source of this luminaire is non-replaceable, at the end of its service life the entire luminaire must be replaced and disposed of in a designated place. This product contains a light source that for design reasons cannot be removed for verification and therefore the entire product is considered a light source. The power cord cannot be replaced if damaged, the unit must no longer be used.

The manufacturer is not liable for any damage caused by improper use.