

Thank you for purchasing our equipment. Please read this manual carefully and heed the safety warnings and instructions before installing, using or repairing the equipment. This will ensure not only the protection of persons, but also the long life of the equipment.

TECHNICAL PARAMETERS

Power input	5W
Luminous flux	400lm
Chromaticity	3000K
Number of lighting modes	2
Detection distance	7m
Sensor detection angle	120°
Solar panel battery charging time	about 8h
Net luminous time	Min. 1 hour (e.g. 120 switches with 30sec illumination)
Batteries	Li-Ion 3,7V 2000mAh
Solar panel	1.9W, 5V
Dimensions	12 x 11.4 x 8 cm
Degree of coverage	IP54

INSTALLATION

1. Pull out the rear bracket.
2. Insert the dowels into the pre-drilled holes and screw in the bracket.
3. Insert the luminaire into the bracket.
4. Use the switch to turn ON the device and select the mode.

In case of insufficient sunlight, the device can be charged using a USB-C cable, e.g. with a power bank (Fig. A, B).

LIGHT MODE SETTING

MODE I - VYP + Motion sensor

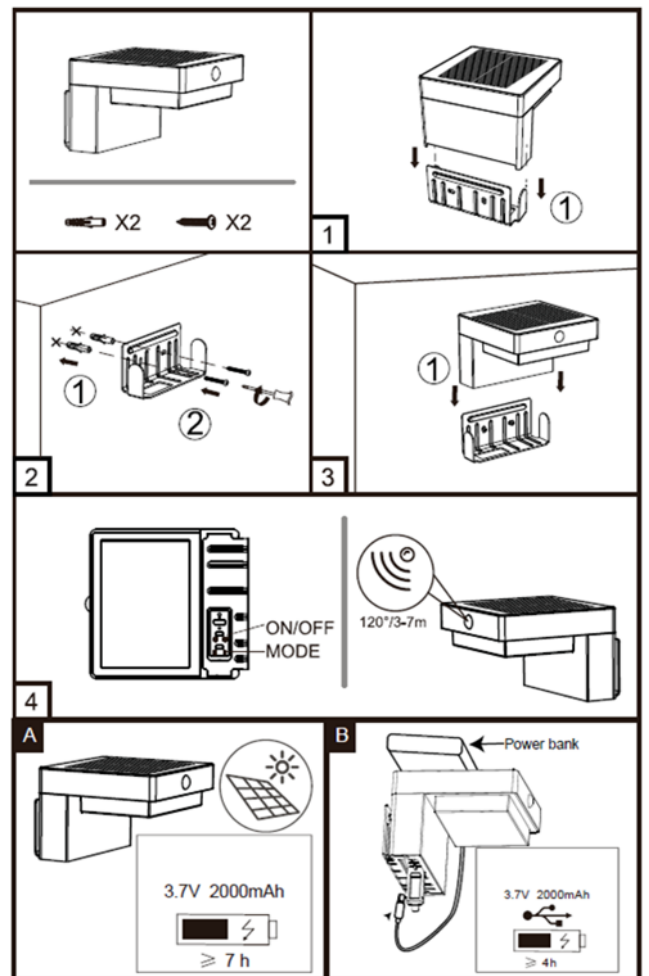


- Set the first switch to mode **I** and the second switch to **OFF**. The device will light up at 100% power for 30 seconds only if it detects motion.

MODE II - AUTO ON. (≤50lux) + Motion sensor



- Set the first switch to mode **II** and the second switch to **ON**. The device will light continuously at approximately 10% power and will light up to 100% when detected.

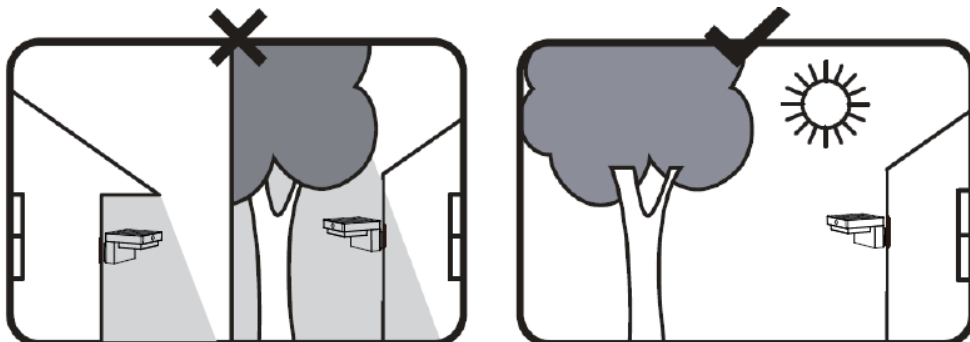


CHARGING THE DEVICE

- The device is continuously recharged by a built-in solar panel. In case the light time is not enough for you, a power bank can be connected using a USB-C cable.

LOCATION OF EQUIPMENT

- Position the device so that the solar panel is not blocked by any obstruction. This will significantly increase the light output. When selecting the location, take into account the maximum detection distance of 7m and the sensor detection angle of 120°.



The light source of this luminaire is non-replaceable, at the end of its service life the entire luminaire must be replaced and disposed of in a designated place. This product contains a light source that for design reasons cannot be removed for verification and therefore the entire product is considered a light source.

The product has been issued with a CE declaration of conformity in accordance with the applicable regulations.

On request from the manufacturer: info@solight.cz, or downloadable from www.solight.cz/en.



SOLIGHT

Solight Holding, s.r.o., Na Brně 1972, Hradec Králové 500 06, Czech Republic.