

Dear customer, thank you for purchasing our product. Please read the following instructions carefully and follow them to serve you safely and to your full satisfaction. This will prevent misuse or damage. Avoid improper handling of this the appliance and always observe the electrical appliance use policy. Keep the instructions for use carefully. The product should only be used by an adult.

The package contains:

- 1 pc LED outdoor chain
- 1 pc Manual

TECHNICAL PARAMETERS

Model	WO795
Input voltage	AC 100 - 240 V
Output voltage	DC 12 V
Colour temperature	RGB
Degree of coverage	IP44 (indoor and outdoor use)
Shade material	pc
Working temperature	-20°C ~ +40°C
Total length	14m + 6m

WARNING

1. Do not repair, disassemble or modify the product.
2. Do not place the product near heat sources.
3. When not in use, remove the plug from the socket.
4. We recommend keeping the bulbs clean. Foreign matter on the surface of the bulb will affect the appearance and illumination of the product.
5. Don't hang anything on the chain.
6. To prolong the service life, it is better to use a soft cotton cloth for wiping. Do not use volatile solvents such as alcohol.
7. Keep out of reach of children.

BASIC INFORMATION & CONTROLS

First, unpack the lighting from the box and fully unwrap it. Plug the power cord into the socket and switch on by pressing On. On/Off. button (⏻) on the control located on the power cord.

You can change the lighting mode by pressing the button (⦿) repeatedly.

The light chain can also be controlled via Bluetooth, using the "Magic Lantern" mobile app.

Sound sensor - responds to tones, sounds and music by flashing LEDs in a given rhythm, the sound sensor can be switched off. The phone's microphone is used as the sound sensor

The chains are interconnectible, maximum 3 chains can be connected (3x 14m + 6m)

MOBILE APP DOWNLOAD

1. You can search for the "Magic Lantern" app in the Apple App Store, Google Play, or scan the QR code and install it.
2. Launch the app and enable Bluetooth access when prompted.
3. Open the menu in the top left corner (☰), tap "My Devices" to see all connected devices.
4. Click on the bulb symbol to start / stop the chain.

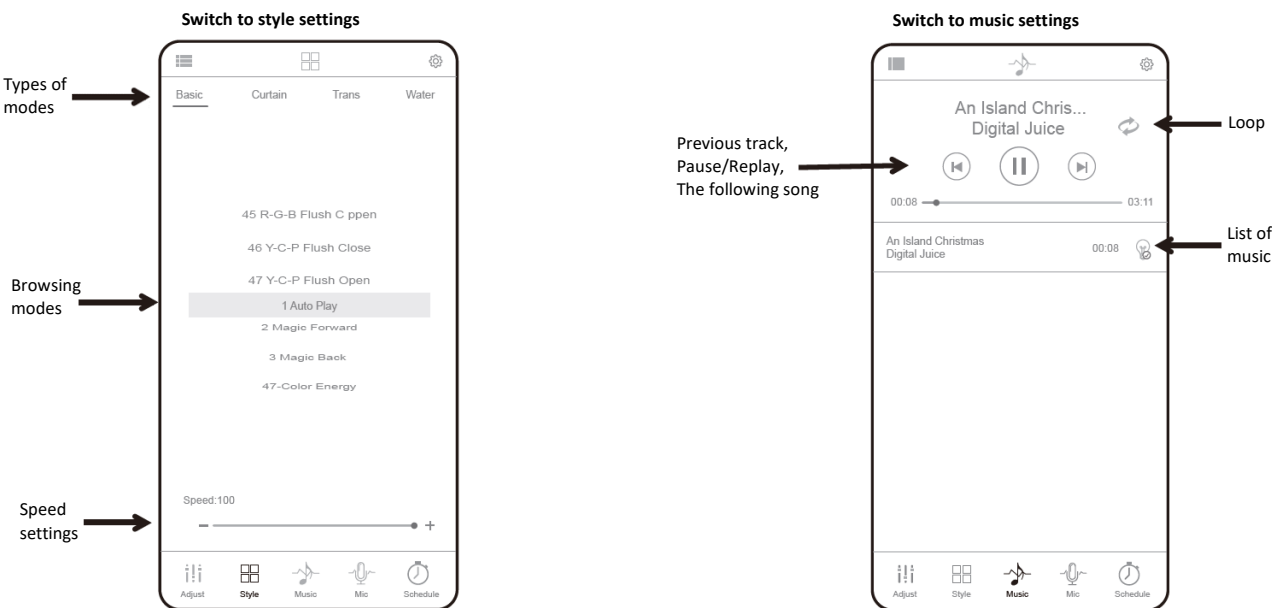
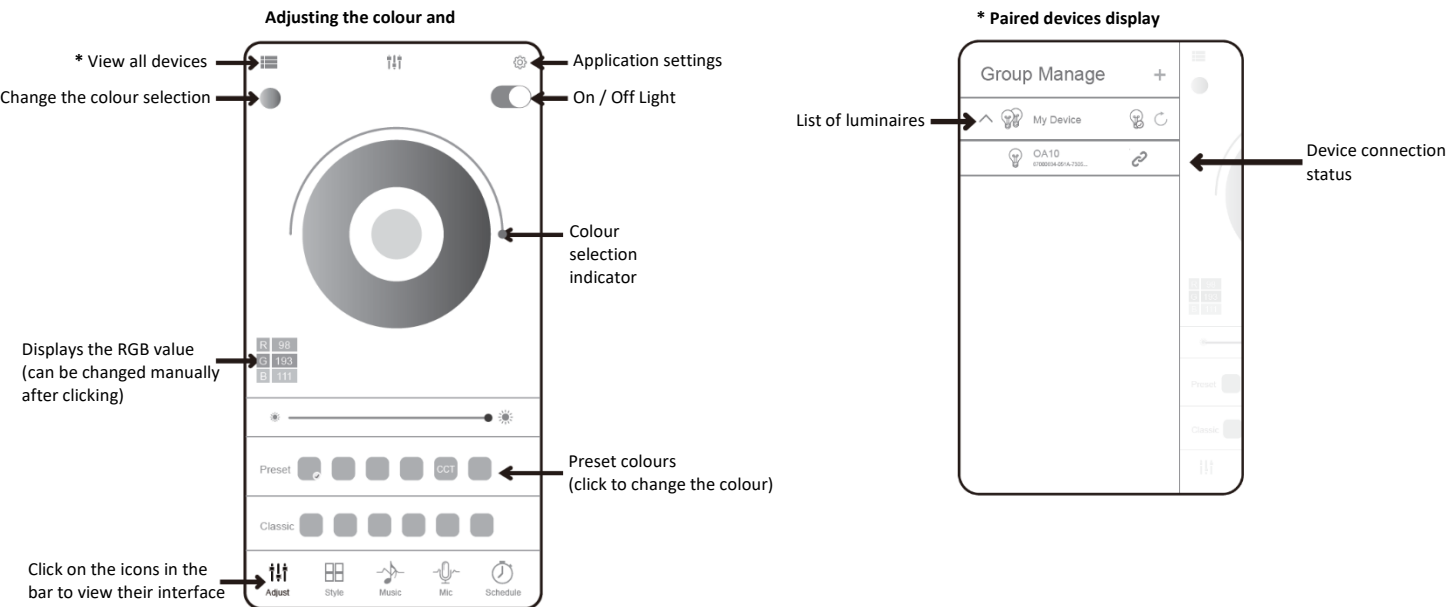
The Magic Lantern mobile app is not a product of Solight.
This app supports Android 4.3 and higher / IOS 8.0 and higher

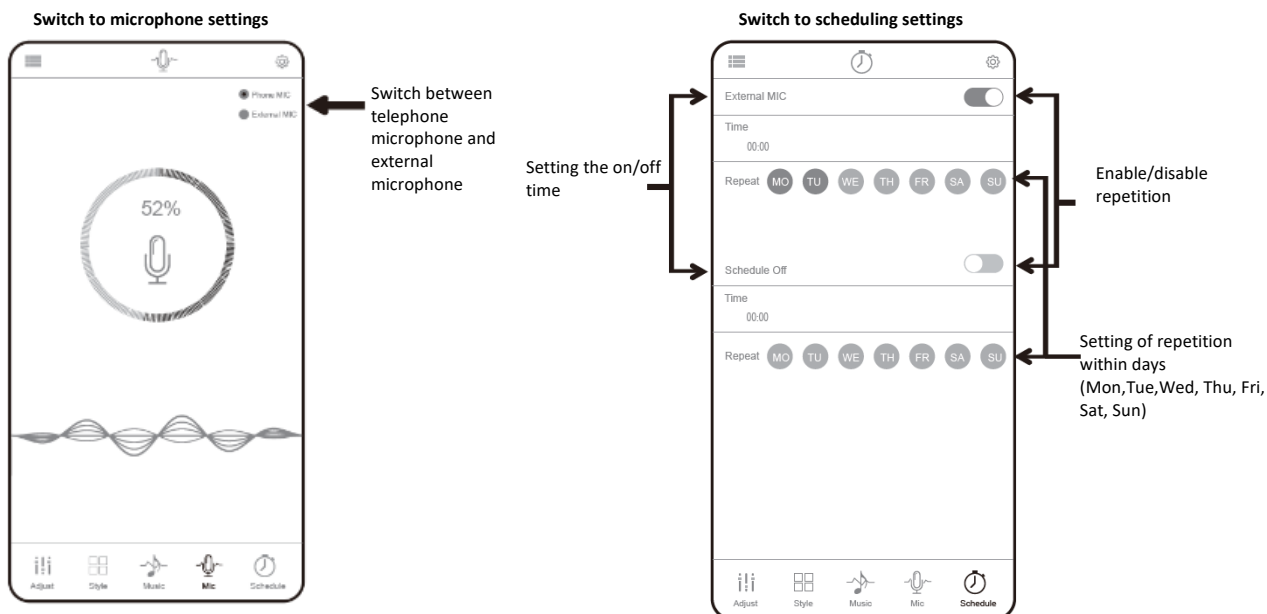


MODES IN THE MOBILE APP

- 1. **ADJUST** - Setting the colours and brightness of the light.
- 2. **STYLE** - Selection of lighting mode types and speed of transitions.
- 3. **MUSIC** - Synchronisation of lighting effects with the melody of the music you have selected. (You can use iTunes to play your own music).
- 4. **MIC** - Synchronize lighting effects with tones captured by a microphone (telephone/external).
- 5. **SCHEDULE** - Scheduling the light chain on/off. You can set the days of the week and the on/off time of the light chain.

Basic graphical interface of the application:





The light source of this luminaire is non-replaceable, at the end of its service life the entire luminaire must be replaced and disposed of in a designated place. This product contains a light source that for design reasons cannot be removed for verification and therefore the entire product is considered a light source. The power cord cannot be replaced if damaged, the unit must no longer be used.

The product has been issued with a CE declaration of conformity in accordance with the applicable regulations. On request from the manufacturer: info@solight.cz, or downloadable from www.solight.cz.



SOLIGHT

Solight Holding, s.r.o., Na Brně 1972, Hradec Králové 500 06, Czech Republic.