

Thank you for purchasing our garden column LED lighting. The top of the luminaire can be tilted. Before installing and using the device, please read these instructions carefully and pay attention to the safety warnings and instructions. This will ensure not only the protection of persons, but also the long-term viability of the equipment. Do not repair or modify the equipment, installation must only be carried out by a qualified technician. The operating temperature of the equipment is between -20°C and 50°C.

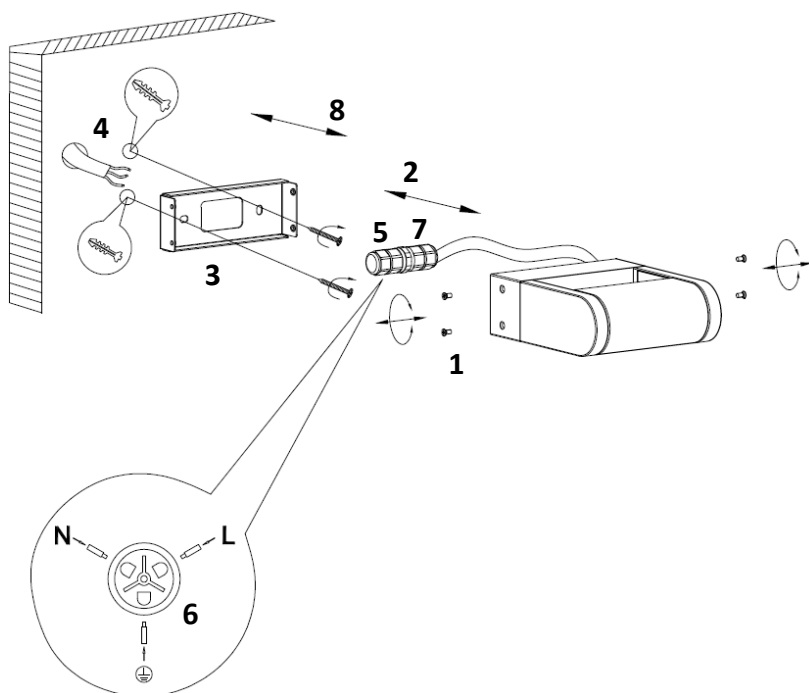
Technical parameters

| | WO808 |
|---------------------------|-------------------|
| Power | 220-240V AC |
| Consumption | 7W |
| Luminous flux | 450lm |
| Chromaticity | 3000K |
| Colour rendering index Ra | >80 |
| Degree of protection | IP 54 |
| Dimensions | 150 x 500 x 60 mm |

Installation

Disconnect the power supply before installation!

1. Unscrew the side screws on the bottom of the device.
2. Remove the bottom cover.
3. Thread the power cable through the bottom cover.
4. Insert dowels into the pre-drilled holes and screw the cover into the selected location.
5. Unscrew the cable coupler.
6. Connect the supply cable to the cable coupler, making sure the connection is correct. (Refer to the green ring on the coupler for wiring markings.) Tighten the coupler when finished.
7. Insert the cable coupler into the body of the luminaire.
8. Attach the top of the luminaire to the bottom cover and screw the side screws in place.



Safety warning

- Installation may only be carried out by a qualified worker.
- Do not cover the luminaire with anything or hang anything on it.
- Do not repair or modify the equipment in any way.

The light source of this luminaire is non-replaceable, at the end of its service life the entire luminaire must be replaced and disposed of in a designated place. This product contains a light source that for design reasons cannot be removed for verification and therefore the entire product is considered a light source. The power cord cannot be replaced if damaged, the unit must no longer be used.

