

# Certifier40G: Next-Generation Cable Certifier

## NGC-4500



### Key Features

- Improve installer productivity up to 50 percent by eliminating unnecessary walking between local and remote units, with a Touch<sup>2</sup> system that lets them view and analyze test results at both ends
- Protect your investment with the most advanced tester in the market that certifies beyond TIA-568/ISO 11801 standards, with a 1600 MHz measurement frequency
- Quickly increase the productivity of new and experienced installers using the revolutionary large touch screen with intuitive user interface

### Maximize Productivity

The revolutionary Touch<sup>2</sup> design, with intuitive touch screen at both ends makes using the Certifier40G the easiest cable tester ever. The full screen at both ends allows users in the field to minimize their walking time by initiating, configuring, and storing tests from either side of a link or channel.

Minimize time spent transferring results off the tester with the capacity to store over 2,000 full Cat-6A graph results.

Market-leading 9 second Cat-6A certification time and 15 second Class FA certification ensures maximum installer productivity.

### Future Proof

The next-generation measurement engine can measure above and beyond the frequencies of current testers, certifying Class-FA frequencies with full Level IV accuracy. The Certifier40G can measure frequencies for all current standards and future cabling standards required for copper cables.

### Maximize Value

The JDSU Certifier40G drives maximum value with a flexible, cost-effective permanent link design, field rugged casing, and simple modular upgrade path. The identical local and remote units make inventory and repair easier. The wide frequency range of the base feature set eliminates further license costs when upgrading for new technologies.

### Benefits

- Revolutionary large touch screen
- Touch<sup>2</sup> two-ended control
- Reduces time walking back and forth
- Future proof 1600 MHz testing
- Fastest CAT 6A/Class FA test
- Level IV accuracy over the full Class FA spectrum
- Integrated planning software
- Optional integrated fiber end face inspection



Superb ease of use with large graphical touch screen

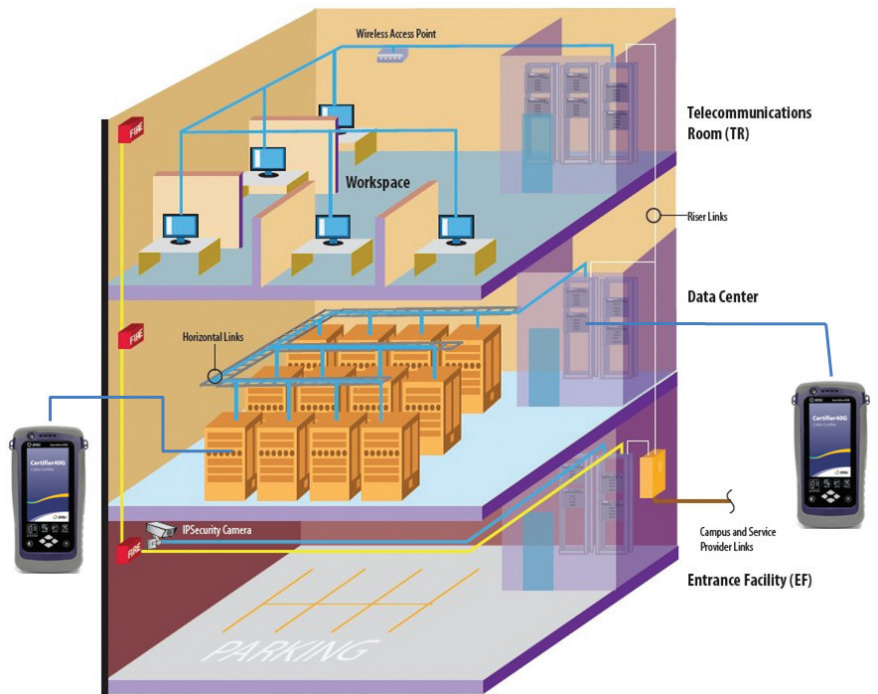


Complete PC desk reporting software

### Superb Productivity

The JDSU Certifier40G features a super bright, color, touch screen display with quick-launch buttons for easy test access. The rich display provides clear information about test and instrument status.

The Touch<sup>2</sup> system with full user interfaces at both ends of the test minimizes setup and result evaluation time for technicians. Previously, certification and troubleshooting that required two technicians to perform efficiently can now be performed using one technician with minimal walking time.



### Economical Ownership

- **Innovative Permanent Link testing approach**  
Certifier 40G achieves the accuracy of probe-attached permanent link cords with a test solution that is economical and accurate.
- **Rugged modules**  
Extra rugged modules, all flush with the main unit, eliminates accidentally dropping of sensitive, expensive parts.
- **Easy to track and manage devices**  
Identical main and remote units make for easy replacement and parts management.



## Specifications

### Test Parameters

Supported frequency range: 1 to 1600 MHz

TIA 1152 level IIIe and ISO/IEC 61935-1 Level IV accuracy

### Supported Copper Cable Tests

Attenuation (Insertion Loss)

Near-end crosstalk (NEXT) in pair-to-pair and power-sum

Attenuation-to-crosstalk ratio far end (ACRF), pair-to-pair and power-sum

Return loss

Loop resistance

Wiremap and shield

Cable length

Total propagation delay

Delay skew between pairs

### Test Standards

TIA -568-C.2 and TIA 1152 Category 5, 5e, 6, 6A

ISO/IEC 11801, EN 50173 Class C, D, E, EA, F, FA

### Power Supply

Removable/rechargeable Li-Ion batteries provide up to 8 hours continuous operation

AC power adapter 100–240 V AC

### Dimensions

Size 232 x 126 x 86.7 mm (9.13 x 4.96 x 3.41 in)

Weight approx. 1.4 kg (3.0 lb) per unit

### Memory

More than 500 MB (more than 2000 test results) of internal flash memory

1 GB USB Flash Drive included for flexible test record storage

### Connectivity

Probe interface connector

RJ45 Ethernet port

USB host and device interfaces

Talk set interface: 3.5 mm stereo jack

### Environmental

Operating temperature 0 to 40°C

Storage temperature –20 to 60°C

Relative humidity 10 to 80%

## Ordering Information

| Part Number                | Description   |
|----------------------------|---|
| NGC-4500-FA-(NA/EU/UK/AU)* | Certifier 40G Class FA copper kit (class FA adapters not included) with NA power cord |
| NGC-4500-6ACH2             | Certifier 40G CAT6A channel adapter pair  |
| NGC-4500-6ALKIT2           | Certifier 40G CAT6A permanent link testing kit  |
| NGC-4500-TERACH2           | Certifier 40G CLASS FA TERA channel adapter pair                                      |
| NGC-4500-TERAL2            | Certifier 40G CLASS FA TERA permanent link adapter pair                               |
| NGC-4500-GGARJCH2          | Certifier 40G CLASS FA GG45/ARJ45 channel adapter pair                                |
| NGC-4500-GGARJL2           | Certifier 40G CLASS FA GG45/ARJ45 permanent link adapter pair                         |

Upgradable to Tier 1 fiber certification with end-face inspection

\*Please specify regional cables: North America (NA) Type A, European (EU) Type C, United Kingdom (UK) Type G, Australian (AU) Type I.



Two complete units to minimize time spent initiating, naming, and saving results



USB Flash Drive support to transfer test results



For more fiber testing and certification capabilities, combine the Certifier40G with one of the market-leading fiber testers from JDSU, such as the T-BERD/MTS-4000 with Quad OTDR.

## Test & Measurement Regional Sales

|   |  |   |   |  |
|---|--|---|---|--|
| <b>NORTH AMERICA</b><br>TEL: 1 866 228 3762<br>FAX: +1 301 353 9216 | <b>LATIN AMERICA</b><br>TEL: +1 954 688 5660<br>FAX: +1 954 345 4668 | <b>ASIA PACIFIC</b><br>TEL: +852 2892 0990<br>FAX: +852 2892 0770 | <b>EMEA</b><br>TEL: +49 7121 86 2222<br>FAX: +49 7121 86 1222 | <b>WEBSITE: <a href="http://www.jdsu.com/test">www.jdsu.com/test</a></b> |
|---|--|---|---|--|